

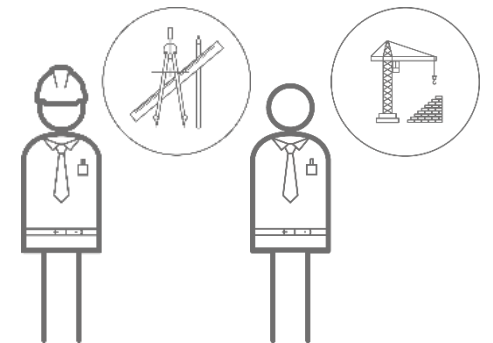


**ADD.VANTAGE  
CLIMATE PROTECTION**



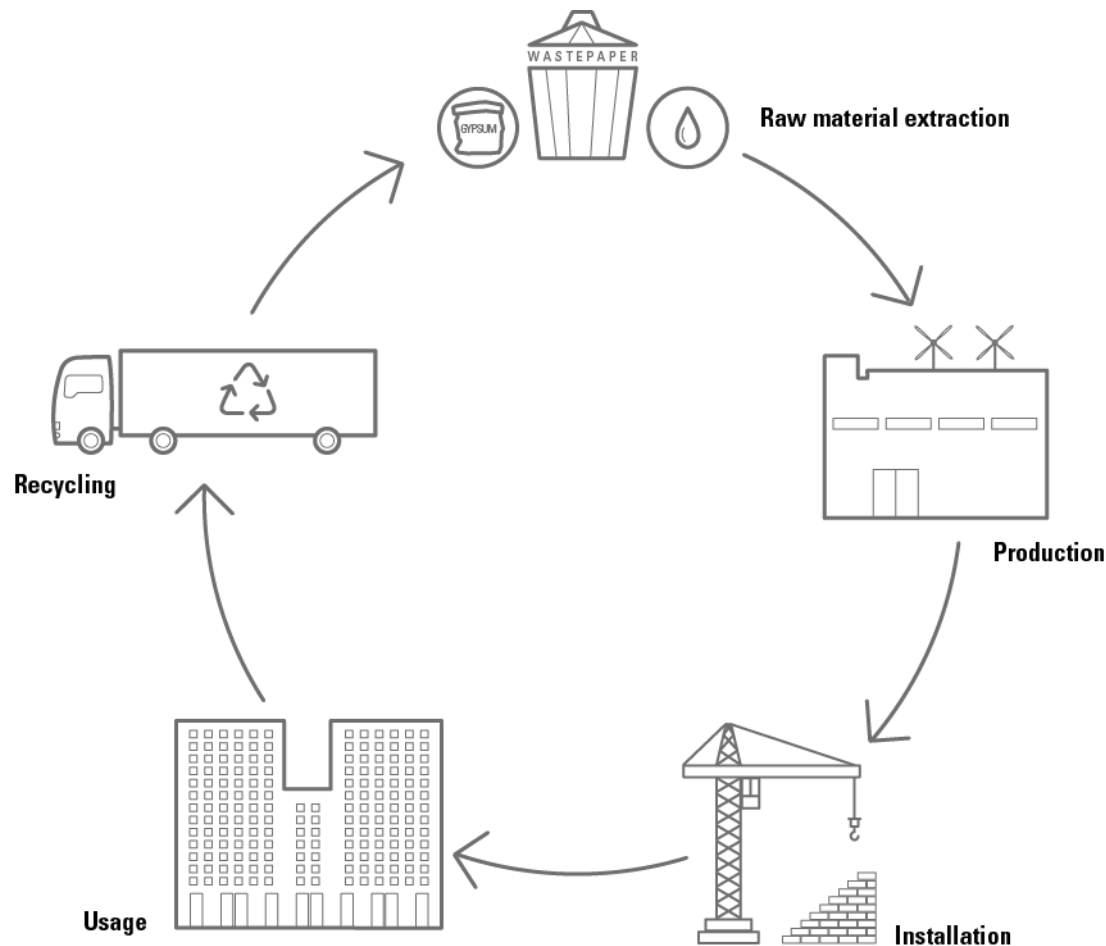


„KNOWING WHERE WE STAND.“



# ADD... | CLIMATE PROTECTION

## KNOWNIG WHERE WE STAND



- + CO<sub>2</sub> footprint of our production sites
- + Specific life cycle assessment per m<sup>2</sup>/product
- + Verified environmental product declarations (EPDs)
- + CO<sub>2</sub> neutral floor panels are available

# ADD... | CIRCULAR ECONOMY

## NUMBERS, DATA, FACTS

### **Cogeneration Plant (Chipped wood):**

Annual production of approx. 2 million kWh through the combustion of 700 t of wood dust and pallet waste



### **PV:**

With around 12,400 m<sup>2</sup> of photovoltaic systems, we generate 1,329 kW per year

→ Savings of around 800 t of CO<sub>2</sub> per year

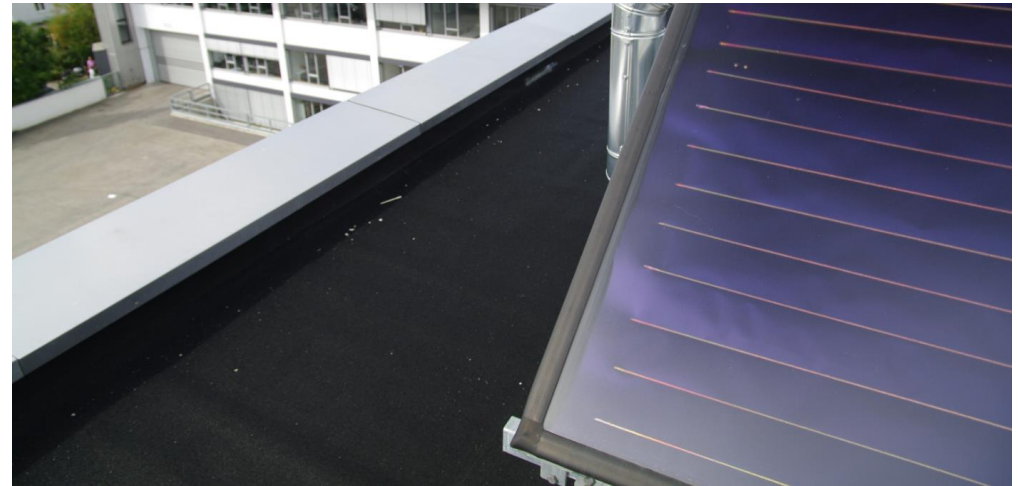


# ADD... | CIRCULAR ECONOMY

## NUMBERS, DATA, FACTS

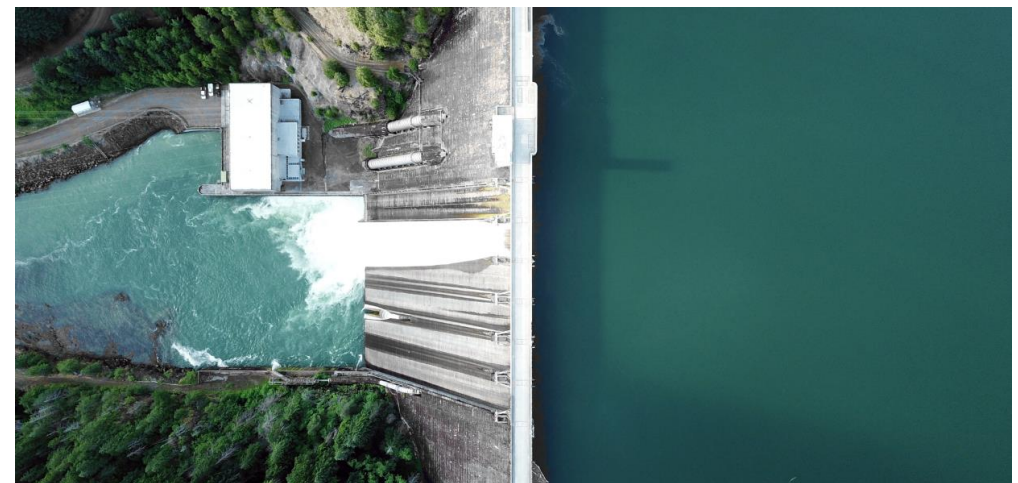
### **Solar air conditioning:**

Pilot plant with a cooling capacity of approx. 100 kW is one of the largest systems in existing buildings in Europe.




### **Hydropower:**

Hydroelectric plant with a performance of 25 kW



**„KNOWING WHERE WE WANT TO GO.“**





## ADD... | CLIMATE PROTECTION VISION – CO<sub>2</sub>-NEUTRAL AND WASTE- FREE SITE

- + Continuous analysis of the main pollution sources through life cycle assessment
- + Further investments in renewable energies such as the installation of further photovoltaic systems with a capacity of 3,120 kW
- + Compensation through climate protection projects



**„KNOWING WHAT WE CAN DO BECAUSE WE  
KNOW WHERE WE STAND.“**



# EXPERIENCE ADD.VANTAGE – VISIT US



Your contact with us:

[green.building@Lindner-Group.com](mailto:green.building@Lindner-Group.com) | +49 8723 20-3752

[info@Lindner-Group.com](mailto:info@Lindner-Group.com) | +49 8723 20-0