

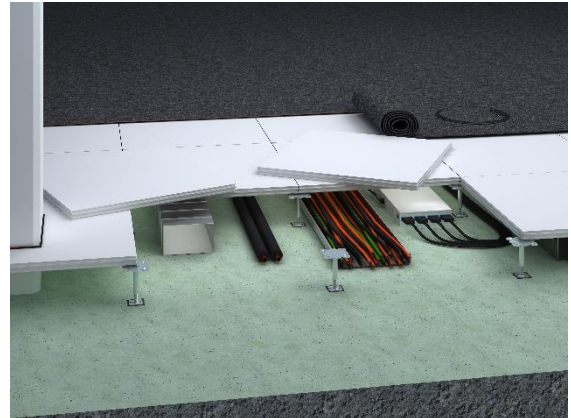


## ADDLIFE

### Dry hollow floor from refurbished raw panels

The hollow floor system ADDLIFE offers stability and a high state-of-the-art technology. The hollow floor panels consist of fibre-reinforced calcium sulphate. The gluing of the ADDLIFE panels is made with a special tongue and grooving at the edges of the panel which forms a closed load-bearing layer. The substructure which forms the necessary cavity for installations consists of height-adjustable zinc-coated steel pedestals from our own production.

- refurbished carrier panels
- superb walking comfort
- very high loadability
- low system weight
- quick installation
- can be combined with other floor systems
- manufactured in Germany according to the highest quality and environment standards



#### Technical data

Weight	47 – 64 kg/m <sup>2</sup>	
Panel thickness	30 – 40 mm	
Standard pedestal height	40 – 2,000 mm	
Pedestal grid	584 x 584 mm	

#### Statics

Load class	DIN EN 13213	1 – 5
Point load (breaking load)	DIN EN 13213	2 kN (4 kN) – 5 kN (10 kN)
Seismic safety		earthquake-proof construction possible

#### Fire protection

##### Reaction to fire performance of the carrier panel

Reaction to fire performance	DIN EN 13501-1	A2-s1,d0
Designation by the building authorities	DIN EN 13501-1	non-combustible



### Sustainability

Circular economy	Cradle to Cradle possible
Self-declaration	self-declaration in acc. with ISO 14021 possible
Environmental product declaration	verified EPD in acc. with EN 15804 / ISO 14025 possible

### Floor coverings

Suitability of covering	elastic coverings, textile coverings, parquet (only 2-layer parquet bonded or floating installed parquet permissible; no solid wood planks)
-------------------------	---