

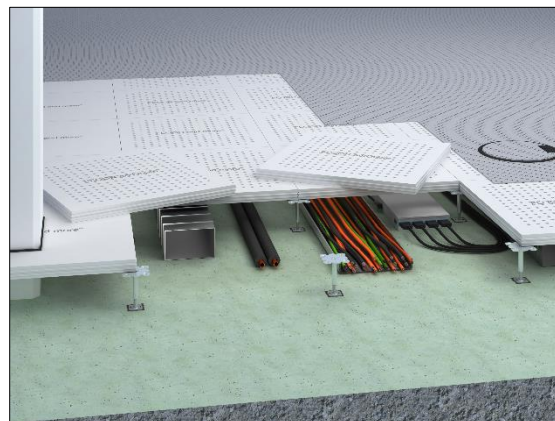


FLOOR and more[®] sonic

Dry hollow floor for seepage ventilation

The dry hollow floor system FLOOR and more[®] sonic is used for the climatic optimisation of rooms. The perforated hollow floor panels type sonic consist of fibre-reinforced calcium sulphate and are optionally applied with HF on the lower side. The gluing of the FLOOR and more[®] panels is made with a special tongue and grooving at the edges of the panels which are forming a closed load bearing layer. The substructure consists of height-adjustable zinc-coated steel pedestals from our own production which form the necessary cavity for installations.

- perforated floor panels
- climatic optimisation
- suited for seepage ventilation coverings
- superb walking comfort
- high loadability
- quick installation
- can be combined with other floor systems
- manufactured in Germany acc. to the highest quality and environment standards



Samples for building portfolio

Assembly Rooms, Broadcasting Rooms, Television Studios, Common Rooms, Facilities for Meetings, Conventions and Conferences, Offices, Stage and Studio Rooms, Banks, Cinemas and Theatres, Concert Halls, Museums, Sales Areas, Places of Assembly, Shopping Centres, Library Rooms, School, School of Higher Education, Court Houses, Government Buildings, Entrance Areas, Escape Routes, Hotels and Resorts, Pharmacies (Production)



Technical data

Weight	42 - 52 kg/m ²
Panel thickness	40 - 41 mm
Standard pedestal height	40 - 2,000 mm
Pedestal grid	600 mm x 600 mm

Climatics

Airflow rate	192 – 1,294 m ³ /h
Free cross-section	4 – 24 %
Lochdurchmesser	8 mm / 10 mm / 13 mm



Statics

Load class	DIN EN 13213	1 - 5
Point load (breaking load)	DIN EN 13213	2 kN (4 kN) - 5 kN (10 kN)
Seismic safety		earthquake-proof construction possible

Fire protection

Reaction to fire performance of the carrier panel

Reaction to fire performance	DIN 4102-1	A2
Reaction to fire performance	DIN EN 13501-1	A1
Designation by the building authorities	DIN 4102-1	non-combustible
Designation by the building authorities	DIN EN 13501-1	non-combustible

Sustainability

Circular economy	Cradle to Cradle possible
Self-declaration	self-declaration in acc. with ISO 14021 possible
Environmental product declaration	verified EPD in acc. with EN 15804 / ISO 14025 possible
FSC	optional (TUEV-COC-000515)

Floor coverings

Suitability of covering	suitable loose-laid carpet tiles
-------------------------	----------------------------------