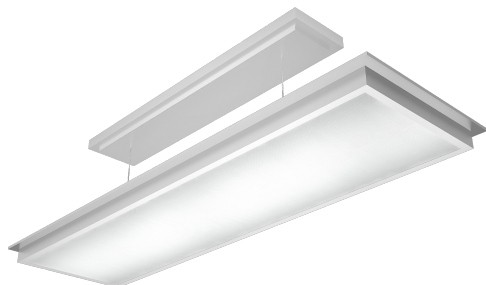


Direct and indirect lighting suspended luminaire in chrome optics, equipped with LED technology.

Light is distributed via a microprismatic cover, suitable for monitor workstations. UGR<19.

Direct: app. 70%, Indirect: app. 30%

Electrical connection is made inside canopy. Power supply passes non-visibly through suspension pipes.



Type	Lumen Output	System Power	Dimension (l x w x h)
PES 340 7.0 bMPS-OS	8.400 Lumen	78 Watt	1.140 x 340 x 600 mm

Technical Information:

Voltage:	220-240 V / 50-60 Hz
Protection Class:	1
Protection Type:	IP20
Ballast:	switchable
Cover:	microprismatic
Colour:	chrome
Light Colour:	4.000K
CRI:	RA>80

Options:

- Light Colour 3.000K
- Ballast DALI dimmable
- Housing acc. to RAL Card

Dimension Drawing:

