

MUTE+ frame B40

Sound absorber made of polyester with fabric cover and frame, baffle, 40 mm

With the MUTE+ frame B40 baffles, you effectively reduce noise and reverberation and also create a design highlight. The sound absorbers, which are suspended vertically from the raw ceiling, can be mounted individually - but they can also be connected to each other just as easily, so that individual module sizes are possible. With the extensive colour palette, both for the frame and for the fabric cover, you can design your individual sound absorber entirely according to your wishes.

- free of mineral fibre, suitable for people suffering from allergies
- tested for harmful substances according to Oeko-Tex® standard 100
- recyclable
- rounded corners
- colour accents due to visible frame
- many different colours and fabrics available

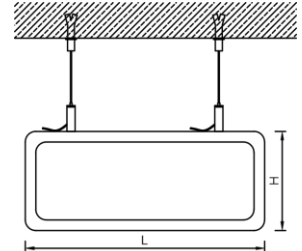
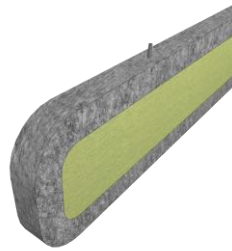


Ceiling elements

MUTE+ frame B40 Type 1

Individual baffle

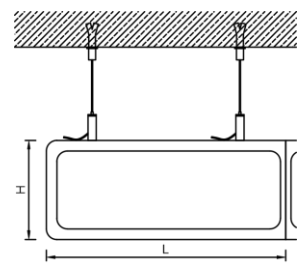
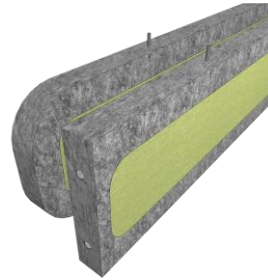
Length (L)	300 - 3,000 mm
Width (B)	40 mm
Height (H)	200 - 1,000 mm



MUTE+ frame B40 Type 2

Start baffle

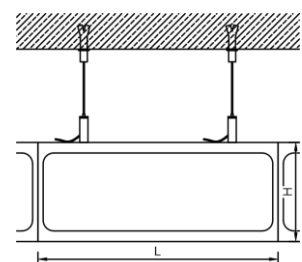
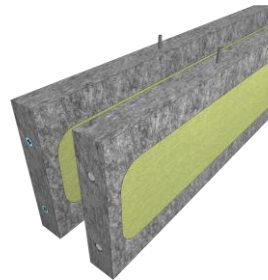
Length (L)	300 - 3,000 mm
Width (B)	40 mm
Height (H)	200 - 1,000 mm



MUTE+ frame B40 Type 3

Central baffle

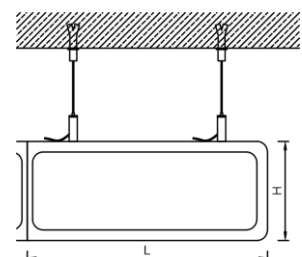
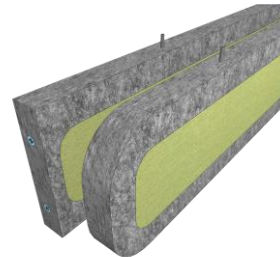
Length (L)	300 - 3,000 mm
Width (B)	40 mm
Height (H)	200 - 1,000 mm



MUTE+ frame B40 Type 4

End baffle

Length (L)	300 - 3,000 mm
Width (B)	40 mm
Height (H)	200 - 1,000 mm



Technical data

Shape	rectangular
Corner	rounded, r = 70 mm
Material	polyester, wool
Weight	approx. 4.5 kg/m ²
Serviceability	removable without tools

Fire protection

Building material class






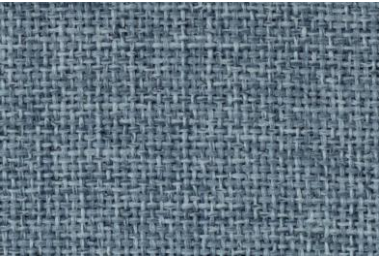




Building material class absorber	DIN 4102	B1
Building material class polyester	DIN 4102	B1
Building material class wool	DIN 4102	B2



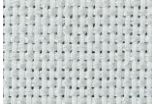



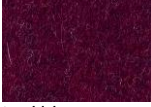


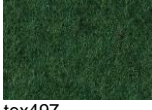
Surfaces

Absorbers

				
white	grey marbled	darkgrey marbled	nightgrey marbled	black
Gloss level: 4 - 5 GU	Gloss level: 3 - 4 GU	Gloss level: 2 - 3 GU	Gloss level: 1 - 2 GU	Gloss level: 1 - 2 GU

Fabrics

			Material Polyester Light fastness Grade 5-6 acc. to DIN EN ISO 105-B02 Rub fastness Grade 4-5 acc. to DIN EN ISO 105-X12
tex197	tex129	tex192	
			Material Polyester Light fastness Grade 4 acc. to DIN EN ISO 105-B02 Rub fastness Grade 3-4 acc. to DIN EN ISO 105-X12
	tex155	tex199	
			
tex231	tex200	tex237	
			
	tex215	tex280	

			<p>Material Polyester</p> <p>Light fastness Grade 5-6 acc. to DIN EN ISO 105-B02</p> <p>Rub fastness Grade 4 acc. to DIN EN ISO 105-X12</p>
<p>tex362</p>	<p>tex322</p>	<p>tex359</p>	
			
	<p>tex336</p>	<p>tex383</p>	
			<p>Material Wool</p> <p>Light fastness Grade 5-6 acc. to DIN EN ISO 105-B02</p> <p>Rub fastness Grade 4-5 acc. to DIN EN ISO 105-X12</p>
<p>tex466</p>	<p>tex414</p>	<p>tex460</p>	
			
	<p>tex427</p>	<p>tex497</p>	

Notice: The representation of colours and structures is not binding, as brightness and contrast may vary depending on the monitor and print. Differences are therefore possible. Further fabrics are available on request. Due to different production batches, colour differences of the absorbers can inevitably occur. The batch discrepancy is not a reason for complaint.

Project solutions

This product data sheet refers to the standard version of the product mentioned above. We would be happy to work with you to find the right solution for your project. Adapted to your building project, you will receive a perfectly matched system. Project-specific constructions and adaptations can be found in the offer documents.