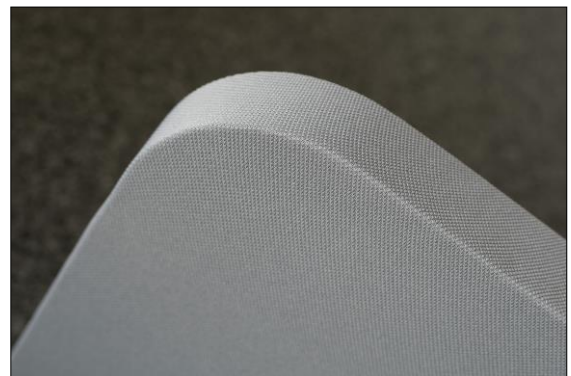


## MUTE+ skin S40

Sound absorber made of polyester with fabric cover, square, 40 mm

With MUTE+ skin, you get a patented, elegant sound absorber with a fabric cover. The fabric is drawn completely over the edge to create a frameless, homogeneous surface. You can choose from various fabric colours. In addition to our standard dimensions, you can also customise the size and shape of your sound absorber.

- free of mineral fibre, suitable for people suffering from allergies
- tested for harmful substances according to Oeko-Tex® standard 100
- recyclable
- installation on ceilings or partitions in interiors
- sound absorption class: A
- rounded corners
- fabric drawn over the edge
- individual sizes and shapes possible



### Technical data

Shape	rectangular	
Standard dimensions	Length (L)	1,000 mm, 1,500 mm, 2,000 mm
	Width (B)	1,000 mm
Individual dimensions	Length (L)	300 - 3,000 mm
	Width (B)	300 - 1,250 mm
Height	40 mm	
Corner	rounded, r = 70 mm	
Material	polyester	
Weight	approx. 4.5 kg/m <sup>2</sup>	
Serviceability	removable without tools	

### Fire protection

#### Building material class

Building material class   absorber	DIN 4102	B1
Building material class   fabric	DIN 4102	B1

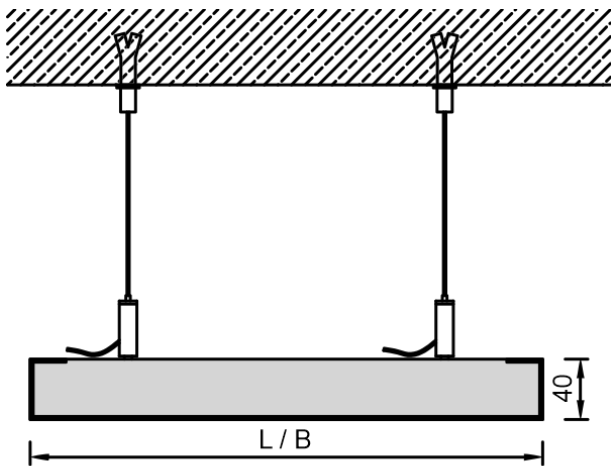
## Acoustics

### Room acoustics

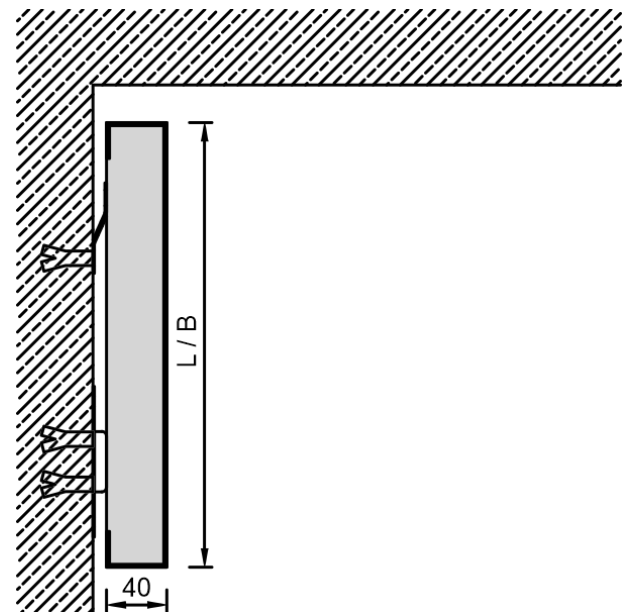
Equivalent sound absorption area per canopy	EN ISO 354		
Rated sound absorption coefficient	DIN EN ISO 354	$\alpha_w$	0.90
Sound absorption class	DIN EN ISO 11654		A
Notice	The evaluation of $\alpha_w$ can only be carried out in dependence and therefore is only an orientation value.		

## Details

### Ceilings

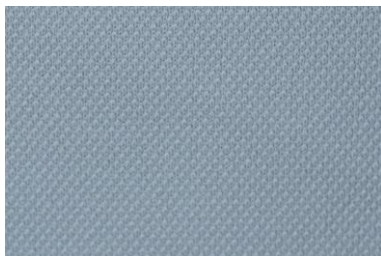


### Partitions



## Surfaces

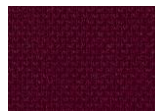
### Fabrics



tex514



tex506



tex571



tex524



tex580

**Material**  
Polyester

**Light fastness**  
 $6 \pm 1$  acc. to UNI EN ISO 105 B02

Notice: The representation of colours and structures is not binding, as brightness and contrast may vary depending on the monitor and print. Differences are therefore possible. Further fabrics are available on request.

## Applications



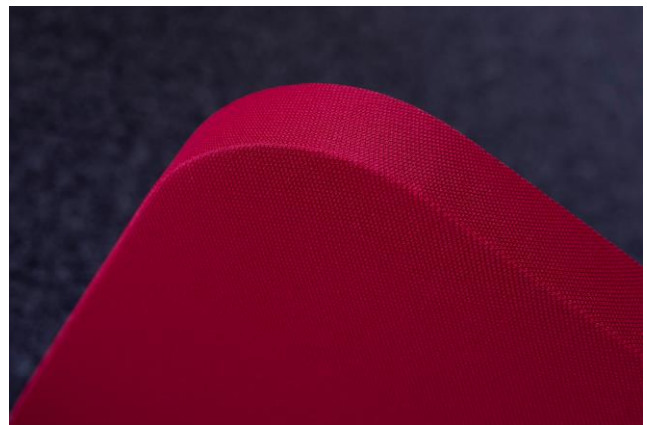
Fabric tex506



Fabric tex506



Fabric tex571



Fabric tex571



Fabric tex580



Fabric tex580

## Project solutions

This product data sheet refers to the standard version of the product mentioned above.

We would be happy to work with you to find the right solution for your project. Adapted to your building project, you will receive a perfectly matched system. Project-specific constructions and adaptations can be found in the offer documents.