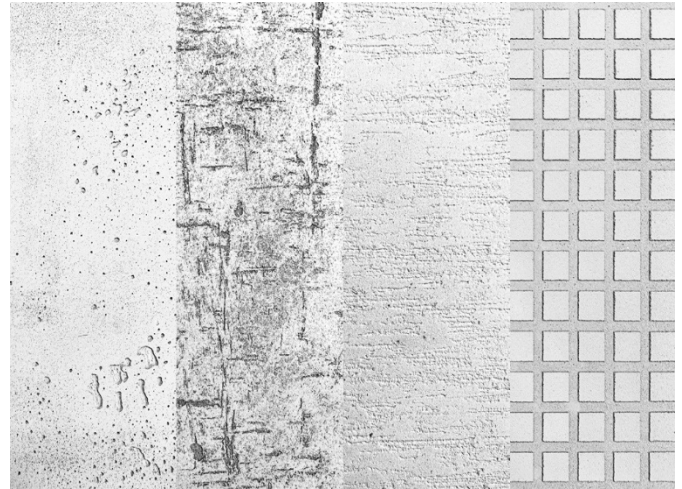


Product Description









Our Lindner ART fine plasters are lime marble plasters for the design of interior wall and ceiling surfaces.

The carefully selected components, such as slaked lime and crushed Carrara marble, ensure optimal processing and contribute to a natural room climate through their diffusion openness.

Whether you want to create the look of weathered stone, pure concrete, polished sandstone or individual relief surfaces – with our flexible system, consisting of two different bases and several additives, this is easily possible.



Technical and Physical Properties

	basis	marble lime plaster (ARTfine, ARTmedium)
	colours	all RAL and NCS colours possible
	layer thickness	depending on the desired technology approx. 0.5 mm for classic Stuccolustro(ARTfine) approx. 1 mm for classic Marmorino(ARTmedium)
	consumption	depending on the desired technology approx. 0.7 kg/m ² for classic stuccolustro (ARTfine) approx. 1.2 kg/m ² for classic Marmorino(ARTmedium)
	processing	Classically by spatula/ Venetian putty with subsequent pressing and polishing. However, a wide variety of tools can also be used. Depending on the application and required technology.
	application temperature	5 – 35 °C, 10 – 75 % r. F.
	packaging units	20 kg bucket (ARTfine, ARTmedium) shelf life up to 2 years from date of manufacture storage frost-free and tightly closed
	Green Building UPD according to ISO 14021	ARTfine and ARTmedium are suitable for LEED and DGNB certifications
	IMO approved for marine equipment	non-combustible according to 2010 IMO FTP Code, Annex 2, Part 1 and certified in modules B and D

